



## *July, 2022 Newsletter*

### **Contents:**

From the Pro Shop  
Greens Committee  
Golf Committee  
Board News  
House Review  
From the Grill

### **2022 TSC Sponsors:**

The Beach Tiki Bar & Grill  
Omara Foods  
The Works Construction  
Mark Wickens Insurance  
Levensteins Abby Carpet  
English Pressure Washing  
Porter Oliger Pearson Funeral Home  
Schwering Farms

# From the Pro Shop...

# From the Greens Committee...

## Key Points:

- \* We purchased a “practically” new Toro Workman utility cart. It has the full 2 year warranty.
- \* The transmission went out on the sprayer and has been repaired by Stones.
- \* Cushman needs a carburetor. We have found someone who might be able to repair them.
- \* Reminder: This year we want carts on the cart path around all tees and greens.
- \* Green and white tees have been separated where possible this season.
- \* Deep Verti-Tine punching has been postponed due to the heat.
- \* The big Toro mower is being used sparingly since the grass is not growing as fast.
- \* It takes 21 days for a ball mark to repair. Please fix your ball marks.
- \* We plan on a big hole creation project in late September/October to reduce thatch on the greens.
- \* We have pruned the roots of the Bald Cypress trees on 13. The roots were killing the green.

## **Adopt A Hole Program for 2022 (See page 6)**

Members who would like to adopt a hole should contact **Keith Lake or Jason Gindling co- chairs of the Green's Committee**. Keith Lake, Hole 1, Bronco, Hole 7, Beth Barstow, Hole 9, Jeff McIntyre, Hole 10, Jim and Mary Skinner, Hole 12, Natalie Acra, Hole 13, Todd Gindling, Hole 17.

Your participation will make a difference in how nice the course looks throughout the golfing season. Thank you to those who participate in this program. Contact Keith by email at [klake124@fuse.net](mailto:klake124@fuse.net). Contact Jason by email at [jasongindling@yahoo.com](mailto:jasongindling@yahoo.com).

# From the Golf Committee...

**Tournaments (using a shotgun start) must have a minimum of 28 players to be considered viable to run. This does not include Night Golf or Crazy Golf tournaments.**

**See page 4 for complete Tournament List.**

## **Highlights for July:**

- 17 - Father/Daughter
- 22 - Ryder Cup Pairings Party 6:30 p.m.
- 23/24 - Ryder Cup
- 30/31 - Men's Club Championship

## **Highlights for August:**

- 6 - GCHS Girl's Invitational 8:30 a.m.
- 7 - Husband/Wife
- 13- Lykens Annual Charity Golf Outing (Course Closed)

# From the Board...

We continue to monitor the financial stability of the club in light of the rising cost of gas and utilities. We will start looking at our budget for next year with a focus on course equipment.

# From the House...

Beth is going to try a menu based approach to offering food from the kitchen. The ladies Monday specials will continue but Wednesday and Thursday specials will be items from the menu. At some point we want to staff the snack bar full time on occasions when we have a lot of golfers scheduled to play. If you have a food you especially like let Beth know.

We have created a new Facebook page dedicated to the kitchen. It is "Clubhouse Grill at Greensburg Country Club". Make sure you visit it and like the page to keep updated.

## **Board of Directors:**

**Phil Collins - President**

**Terry Alverson - Vice President**

**Josh Schwering - Treasurer**

**Steve Dwenger - Secretary**

**Jason Gindling, Eddy Lee, Lou Caperoon, Keith Lake, Michael Johnston**

## **General Manager**

**Kurt Balser**

email: [kurtbalser@greensburgcountryclub.com](mailto:kurtbalser@greensburgcountryclub.com)

**Greensburg Country Club**

**1630 W. Park Rd.**

**Greensburg, IN 47240**

**[www.greensburgcountryclub.com](http://www.greensburgcountryclub.com)**

**Facebook: <https://www.facebook.com/GCC1925>**

**Pro Shop**

**812-663-2229**



### **2022 Tournament Schedule**

#### **April**

- 20 - Men's League Starts
- 24 - Men's Opening Day, 1:00 SG (TSC)
- 25 - Ladies Opening Day, 5:30 PM

#### **May**

- 2 - Ladies and Senior League Starts
- 10 - Tuesday Mixed League Starts
- 13 - Showa Denko League Starts, 5:00 PM
- 15 - 2 Man Modified Stableford, 8:00 AM SG
- 20 - DCMH Foundation Outing, 11:00 AM SG

#### **June**

- 2 - All Month - Ladies Club Championship Begins
- 3 - GCHS Boys HS Sectional, 8:30 AM
- 5 - 2 Man Pinehurst, 8:00 AM Tee Times (TSC)
- 9 - Junior Tour Event, 8:00 AM SG
- 11 - GCHS Girl's BB Fundraiser, 1:00 PM SG
- 12 - Shark Shootout, 1:00 PM SG
- 17 - Friday Goofy Golf, 6:30 PM SG

#### **July**

- 10 - Superintendent's Revenge, 8:00 AM SG
- 17 - Father/Daughter, Tee Times all day
- 22 - Ryder Cup Pairings Party, 6:40 PM
- 23 - Ryder Cup Rd 1, 10:00 AM Tee Times (TSC)
- 24 - Ryder Cup Rd 2, 10:00 AM Tee Times (TSC)
- 30 - Rd 1 Men's Stroke Play, CC, All Flights, Tee Times
- 31 - Rd 2 Men's Stroke Play, CC, All Flights, Tee Times

#### **August**

- 5 - Chamber Outing
- 6 - GCHS Girl's Invite, 8:30 AM SG
- 7 - Husband/Wife, Tee Times all day
- 11 - Lyken's Benefit Outing (Course Closed)
- 21 - Calcutta, 1:00 PM SG
- 26 - Night Golf, 9:00 PM SG

#### **September**

- 10 - September Classic, Make your own tee times (TSC)
- 11 - September Classic, 8:00 AM SG (TSC)
- 17 - GCHS Girl's HS Sectional, 8:30 AM
- 18 - Cross Country Scramble, 8:00 AM SG
- 25 - Member/Guest, 9:00 AM SG

#### **October**

- 1 - Fall 2 Day Stroke Play, Rd 1, (TSC)  
*\*Make your own tee times*
- 2 - Fall 2 Day Stroke Play, Rd 2, Tee Times (TSC)
- 3 - Ladies Closing Day, 5:30 PM SG
- 9 - Men's Closing Day, 12:00 PM SG  
*\*Shootout immediately following, Top 10 TSC*
- 16 - Octoberfest, 12:00 PM SG (Make own teams)

#### **November**

- 6 - Gobbler Open, 12:00 PM SG (Make own teams)





# Greensburg Country Club

## Event Rental Pricing

Member: \$150 (\$50 deposit refundable with 2 weeks notice.)  
Member-Sponsored: \$200 (\$75 deposit refundable with 2 weeks notice.)  
Public: \$250 (\$100 deposit refundable with 2 weeks notice.)  
4 hours rental time, \$50 each additional 2 hours  
Upon Request: Bartender: \$50 (Get 2 hours of additional rental time)

**By law, no outside alcohol may be brought onto the premises!**

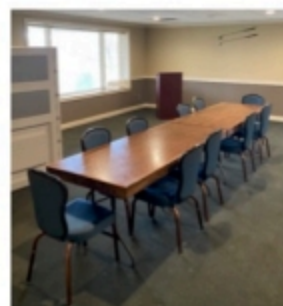
Basic Package: Event space provides tables and chairs, renter provides their own decorations and picks up trash before leaving.

Better Package:(\$75 extra for linens) Event space provides tables and chairs with linen on the tables, renter provides any other decorations and picks up trash before leaving.

Best Package: (\$100 extra for linens and table decorations) Event space provides tables and chairs with linen and table decorations, renter provides any other decorations and picks up trash before leaving.



Free use of our foyer and conference center for meetings to plan your event.  
Call us: 812.663.2229 or Message us: <https://www.facebook.com/GCC1925>





Clubhouse Bar & Grill  
At Greensburg Country Club

---

*★ please ask for availability ★*



## Clubhouse Hamburger - \$5

---

Patty fresh off the grill served on a white bun with pickle slices.

- with cheese \$6
- Deluxe (tomato, onion, lettuce) \$7

## Meatloaf Sandwich - \$8

---



Home made meatloaf topped with tomato sauce and American cheese, grilled on sourdough bread.



## Mom's Meatloaf Sandwich - \$7

---

Chilled, served on sourdough bread with mayo and pickle slices.

## Reuben - \$10

---



Pastrami with melted baby swiss, western Russian dressing, sauerkraut, served on beefsteak rye.



## Fish Sandwich - \$8

---

Two cod triangles topped with iceberg lettuce shreds toasted on a brioche bun. Served with tartar sauce and malt vinegar on the side with a lemon wedge.

---

Make a Reservation



434 - 981 - 2958



Follow us on 

Greensburg Country Club  
& Event Center

## Color the Course

We would like to continue a volunteer program this year. Every tee has a planting bed. The idea would be for someone, or couple, to adopt one of those areas. You would furnish your own plants for the summer. Some planting beds are small, some are a medium size, and others are fairly large. All areas are within the irrigation system however there may be times additional water is needed.

If you are interested in volunteering for an area send Jason Gindling or me, Keith Lake an email. [klake124@fuse.net](mailto:klake124@fuse.net) or [jasongindling@yahoo.com](mailto:jasongindling@yahoo.com). Our goal is to have someone for each of the 18 holes.

If you are unable to adopt a planting area but would like to donate to help us purchase flowers fertilizer, and mulch drop us an email.

